



## Pressure Reducing Valve, Flanged Ends Fig. VA1318

### Specification

- ✓ Reducing valve: reduces a higher inlet pressure to a lower outlet pressure.
- ✓ Constant outlet pressure over wide flow range.
- ✓ Pilot-operated main valve not subject to pressure fall off.
- ✓ Outlet pressure is adjustable with single screw.
- ✓ Adjustable opening / response speed.
- ✓ Stabilized regulation at near-zero flow.
- ✓ Flanged and drilling complies with EN1092-2 PN10/16; ANSI B16.1 Class125.
- ✓ Upstream pressure: Max 300 psi, 175 psi, 10 bar, 16 bar.
- ✓ Downstream pressure: 15 psi - 60 psi, 35 psi - 85 psi, 65 psi - 165 psi.
- ✓ Fusion Bonded Coating or Spray Painted Interior and Exterior .

### Material Specification

#### Main Valve

Part	Material	EN Specification	ASTM Specification
Body	Ductile Iron	EN 1563 EN-GJS-450-10	A536 Grade 65-45-12
Bonnet	Ductile Iron	EN 1563 EN-GJS-450-10	A536 Grade 65-45-12
Seat	Stainless Steel	EN 10213 GX5CrNi19-10	A351 Grade CF8
Stem	Stainless Steel	EN 10088 X5CrNi18-10	A276 Type 304
Diaphragm	Nylon Reinforced Natural Rubber/EPDM/NBR		
Seat Disc	Rubber	EN 681 EPDM/NBR	D2000 EPDM/NBR
Pressure Reducing Pilot	Bronze	EN 12420 CW306G	B148 C95200

#### Trim

No.	Components	No.	Components
1	Basic Control Valve	5	Y-Strainer
2	Pressure Reducing Pilot	6	Isolation Ball Valve(optional)
3	Ejector	7	Flow Control Valve
4	Flow Control Valve	8	Pressure Gauge

### Main Dimensions (mm)

Size	DN40	DN50	DN65	DN80	DN100
L	200	230	290	310	350
H	180	200	215	265	290
W	260	270	290	305	320

Size	DN125	DN150	DN200	DN250	DN300
L	400	480	600	730	850
H	340	390	470	570	690
W	340	370	420	470	520

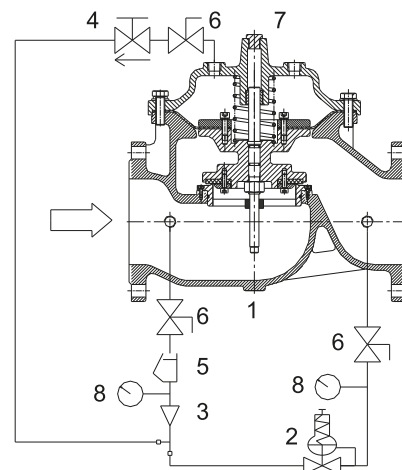
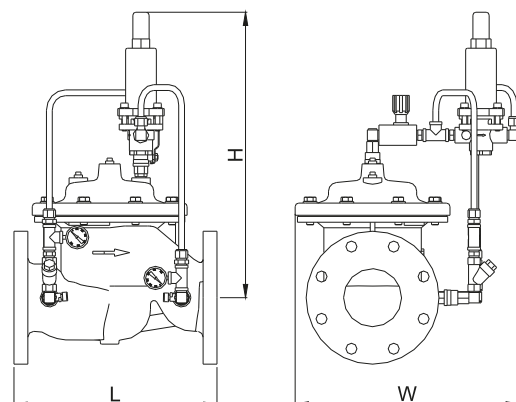
• Design Standard: CJ/T 219 , CJ/T 256,JB/T 10674

• Connection Standard: BS EN 2-1092

• Working Pressure: PN16/10

• Temperature Range: 0 °C - 80 °C

• Coating: Fusion Bonded Epoxy Coating in accordance with ANSI/AWWA C550



#### Notes

Designs, materials and specifications shown are subject to change without notice due to the continuous development of our products.